



MONTHLY MEMBERSHIP PROGRESS REPORT

District 322C4

Results as of: 11/30/2017

GMT: SWADESH RANJAN SAHA

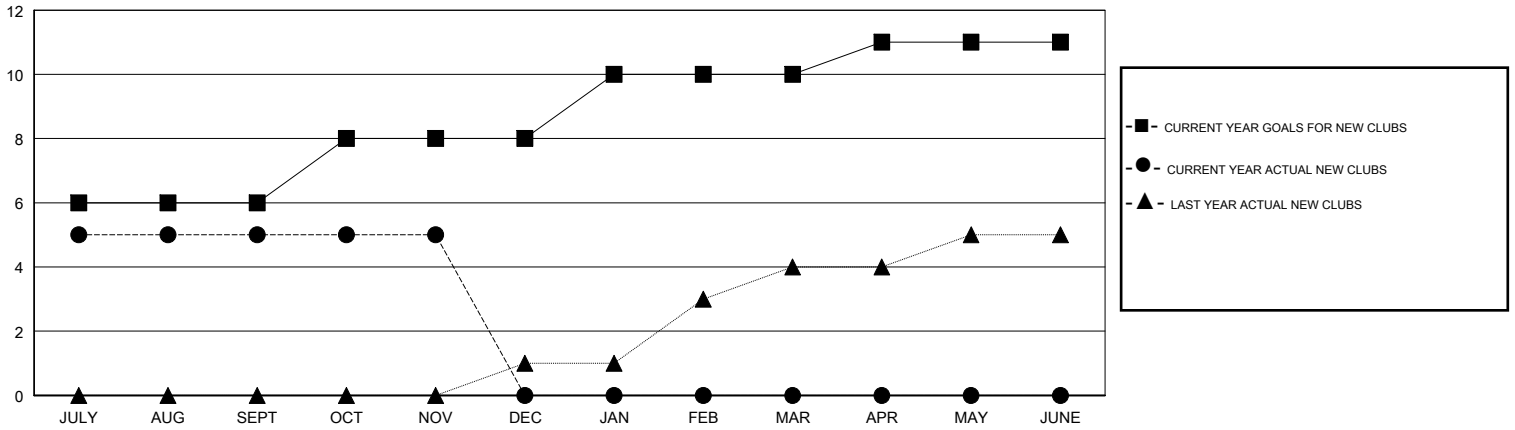
LOCATION INDIA

GMT CA

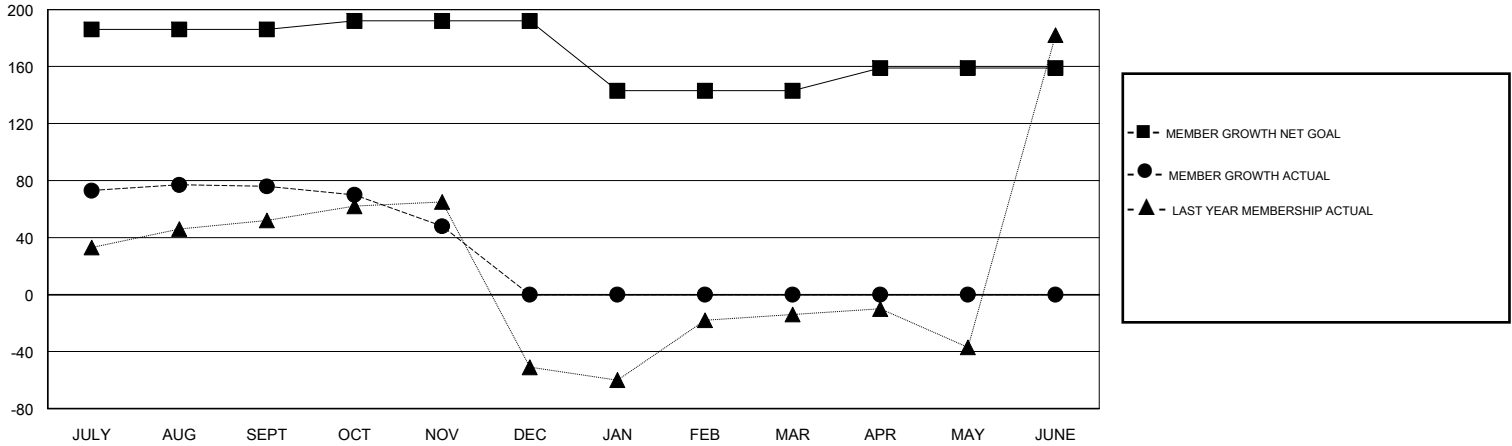
Clubs			
RESULTS FOR 2017-2018			
QUARTER	NEW CLUB GOAL	NEW CLUBS	DROPPED CLUBS
JULY/AUG/SEPT	6	5	1
OCT/NOV/DEC	2	0	0
JAN/FEB/MAR	2	0	0
APR/MAY/JUNE	1	0	0

Members			
RESULTS FOR 2017-2018			
QUARTER	MEMBER GROWTH NET GOAL	MEMBER GROWTH ACTUAL	DROPPED MEMBERS ACTUAL (including transfers)
JULY/AUG/SEPT	186	111	35
OCT/NOV/DEC	6	0	28
JAN/FEB/MAR	-49	0	0
APR/MAY/JUNE	16	0	0

GOALS AND ACTUAL NEW CLUBS CUMULATIVE



GOALS AND ACTUAL MEMBERS CUMULATIVE



DROPPED CLUBS: 1	12 CLUBS OF 53 ADDED 1 OR MORE NEW MEMBERS	<u>GENDER DISTRIBUTION</u> MALE 1,076 (67.21%) FEMALE 525 (32.79%) Women Percentage Fiscal Year Goal: 36%
<u>DROPPED MEMBERS</u> DECEASED 0 CLUB CANCELLED 12 OTHER 51 TOTAL 63	CLICK HERE FOR CUMULATIVE MEMBERSHIP DATA	TOTAL FAMILY UNIT MEMBERS 604 FAMILY MEMBERS PAYING HALF DUES 335